

The Tower of Pisa

The Leaning Tower of Pisa is the campanile of the cathedral of the Italian city of Pisa.



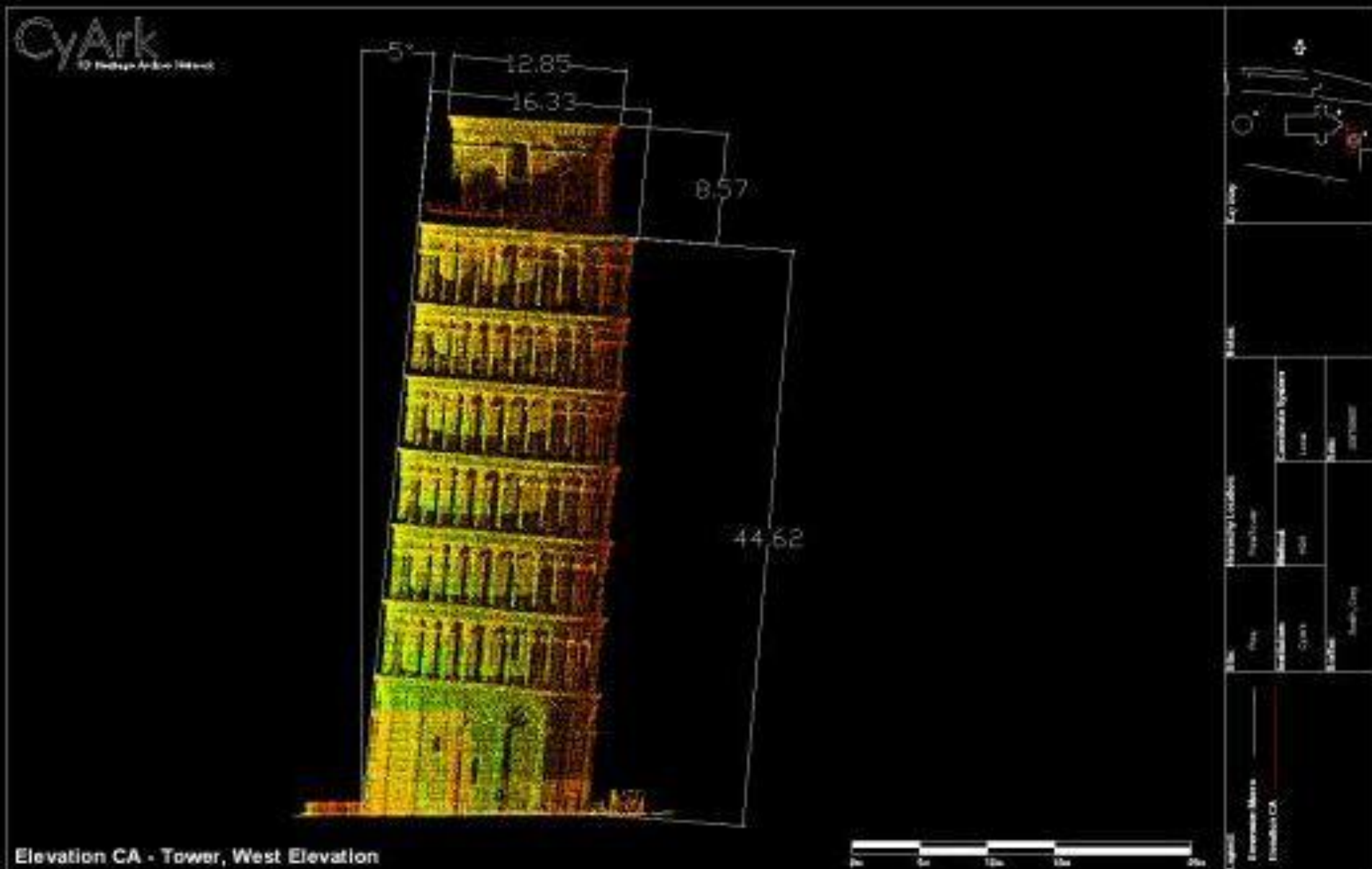
The tower of Pisa at night



The architect of the Leaning Tower of Pisa

- There has been controversy about the real identity of the architect of the Leaning Tower of Pisa.
- For many years, the design was attributed to **Guglielmo** and **Bonanno Pisano**, a well-known 12th-century artist of Pisa. A piece of cast with his name was discovered at the foot of the tower in 1820.
- However, recent studies seem to indicate **Diotisalvi** as the original architect. However, he usually signed his works and there is no signature by him in the bell tower which leads to further speculation.

- The height of the tower is 55.86 metres on the low side and 56.67 on the high side. The tower has 296 steps.



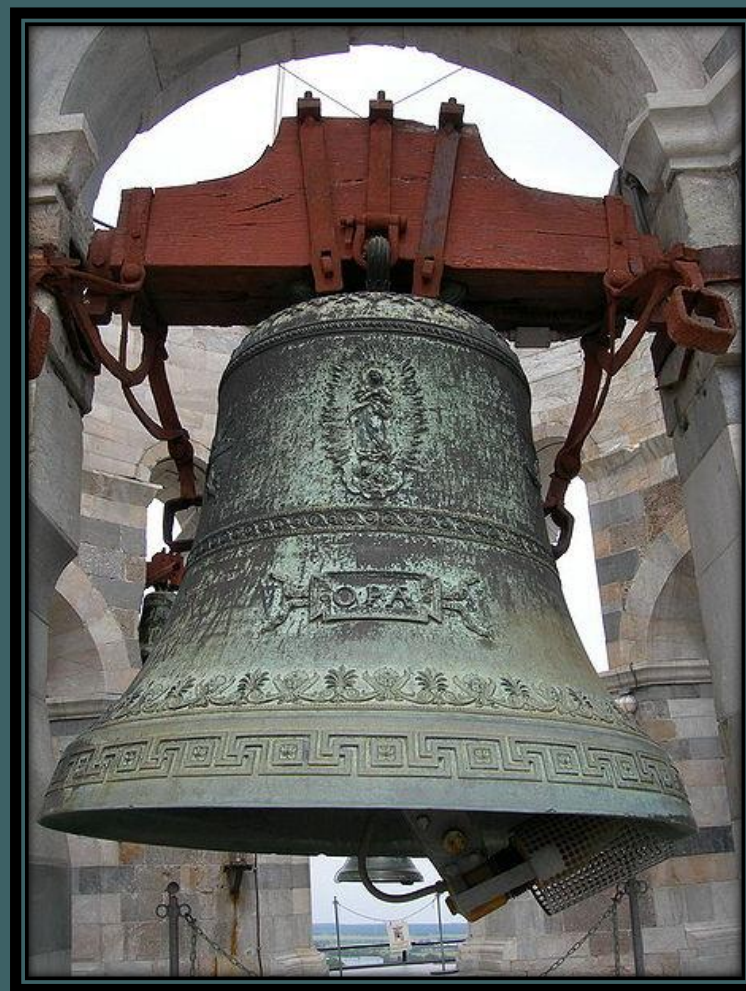
Plaque in memory of Galileo Galilei's experiments



inner
staircase



There are seven bells, one for each note of the musical major scale.





View from the top