

Quizlet

NAME _____

13 Matching questions

1. ____ yoke (n)

2. ____ chimney

3. ____ a kettle

4. ____ to loosen

5. ____ suffering

6. ____ convention (n)

7. ____ tidings (n)

8. ____ to endow

9. ____ dusk (n)

10. ____ discouragement (n)

11. ____ poison (n)

12. ____ to absorb

13. ____ region (n)

A. news

B. a generally agreed-upon practice or attitude - agreement

C. Ζυγός



D. to equip; to provide with a talent or quality



E. a metal pot for stewing or boiling



F. the time at the end of the day just before dark



G. a tall pipe used to carry smoke out of a building



H. feelings of mental or physical pain

I. Δηλητήριο



J. to take in - απορροφώ

K. an area

L. a feeling that there is no way to cope or to manage

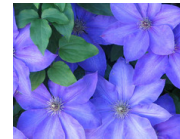


M. to make something less tight -χαλαρώνω



13 Multiple choice questions

1. vines



- A. clematis
- B. to retain
- C. a kettle
- D. chimney

2.



- A. to renew
- B. a tongue
- C. to lick
- D. an elm tree

3. smothered - πνιγμένος



- A. to supplant
- B. immaculate (adj.)
- C. vague (adj.)
- D. stifled (adj.)

4. a fence formed by a row of closely planted shrubs or bushes



- A. chimney
- B. a hedge
- C. to renew
- D. a kettle

5. spotless; perfect

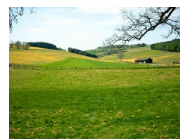
- A. affection (n)
- B. vague (adj.)
- C. discouragement (n)
- D. immaculate (adj.)

6. σταχτες



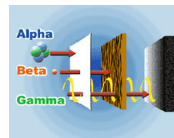
- A. a hedge
- B. ashes
- C. to retain
- D. a bond

7. n. a field of grass or wildflowers.



- A. to endow
- B. a hawthorn
- C. a meadow
- D. a hedge

8. to pass into or through



- A. to renew
- B. to long to
- C. to penetrate
- D. to absorb

9. n. A thorny shrub much used in England for hedges.



- A. to flicker
- B. a hawthorn
- C. to retire
- D. a meadow

10. to get back
A. to long to
B. to throw off
C. to regain
D. to absorb

11. disappointed
A. to absorb
B. to regain
C. to throw off
D. disillusioned

12. An area of open wasteland, often swampy. - χερσότοπος



- A. chimney
B. to absorb
C. moor
D. to loosen



- A. to flicker
B. to penetrate
C. a tongue
D. an elm tree

12 True/False questions

1. to make something new again → to renew

- ☐ True
☐ False

2. (v) to stop working; to withdraw - αποσύρομαι → to endow

- ☐ True
☐ False

3. A feeling of great fear



→ horror (n)

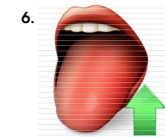
- ☐ True
☐ False

4. link, connection - δεσμός → a bond

- ☐ True
☐ False

5. to take the place of → to long to

- ☐ True
☐ False



→ a tongue

- ☐ True
☐ False

7. to want sth very much



→ to supplant

- ☐ True
☐ False

8. to keep → to renew

- ☐ True
☐ False

9. to get rid of → to penetrate

- ☐ True
☐ False

10. a positive feeling of liking → affection (n)

- ☐ True
☐ False

11. not clear



→ stifled (adj.)

- ☐ True
☐ False

12. a momentary flash of light - τρεμοσβύνω



→ to supplant

- ☐ True
☐ False